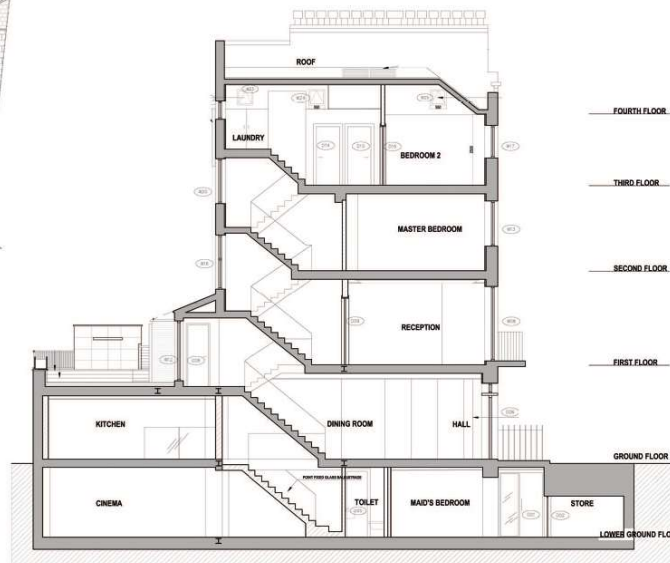




Before



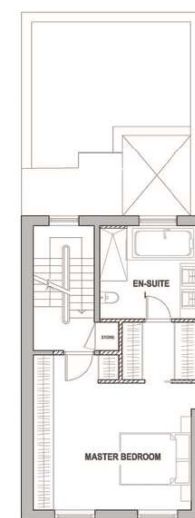
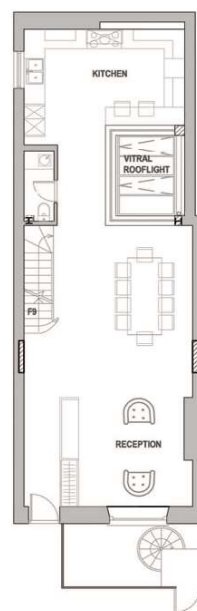
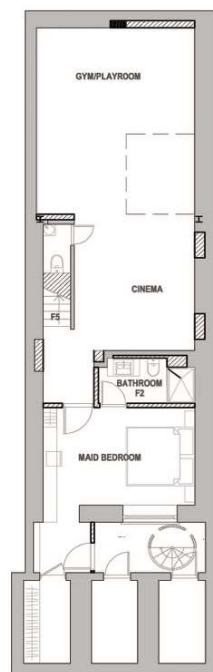
After



ELEVATIONS AND SECTION

The site is located in the City of Westminster Conservation area, in West London, just off Sussex Gardens in an exclusive residential area close to Oxford Street, Notting Hill Gate and Hyde Park. The aim of the refurbishment and extension of this four storeys Georgian town house is to upgrade and modernise the interior in order to create a high quality environment and to increase the accommodation they require.

The extension does not occupy more than 50% of the existing patio and neither does it interrupt the uniformity of the main rear elevation. A new square lightwell in the centre of the dwelling lets the lower ground and ground floor extension and reduced basement amenity space. The ground floor has been refurbished in order to create an open plan living, dining and kitchen space that will provide a brighter, airy experience. The rear has been extended to create a larger kitchen capable of serving the enlarged dwelling, and correspondently creates an extended first floor roof terrace above the new kitchen space, characterized by a new water feature.



PLANS