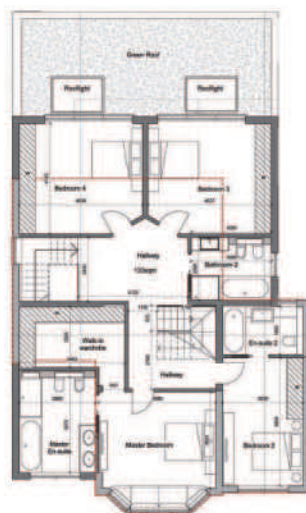
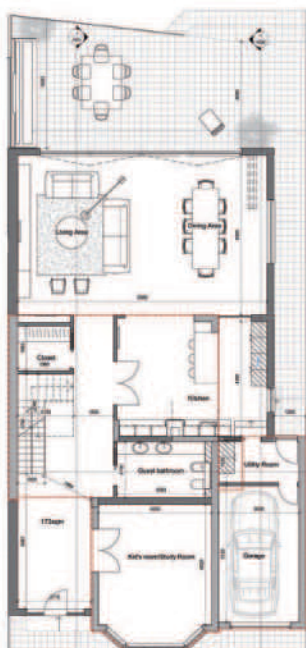


This project proposes the redevelopment of a dilapidated mid terrace detached house situated in Golders Green (Borough of Barnet). The full width ground floor extension provides a massive dining-living area connected with the new contemporary looking kitchen and a full length folding-sliding glazed doors to access to the new landscaped garden. The roof extension will host 2 new big bedrooms. Numerous measures will be implemented to considerably improve energy efficiency like by use of high performance insulation, double glazing, draught proofing etc. (to improve the thermal efficiency of proposed walls, windows, floor and roof), natural ventilation, installing high efficiency condensing boilers, heating controls (timer programmers and room thermostats), installing energy efficient appliances where available, providing fitting control of energy efficient lighting.



ELEVATION AND SECTION



PLANS



VISUALS