

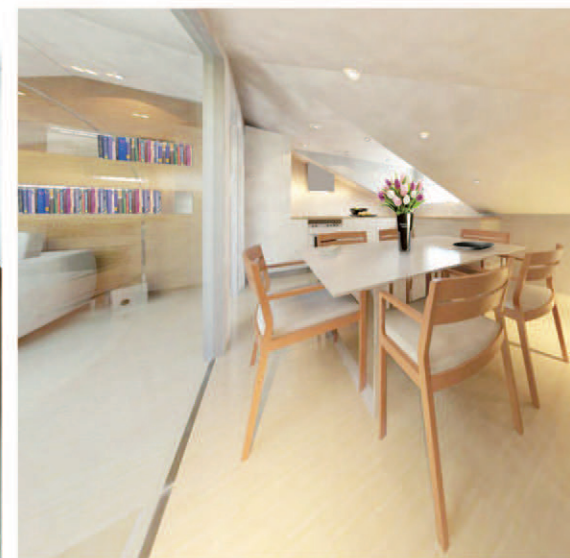


STREET ELEVATION

The site is located within Islington area and along a street characterized by 4 storey terraced Victorian house. The aim of the scheme has been to create roof habitable rooms and extend the property on the side. The aim of the refurbishment has been to accommodate in the existing 4 storey house a two bedroom flat and a three bedroom flat. Each room has been designed minimally optimizing the existing small roof space and according to the client's need thanks the dormers, each to the front and rear elevation, and roof-light the kitchen and living room at top floor looks bright and cozy.



PHOTO-MONTAGE



INTERIOR VISUALS